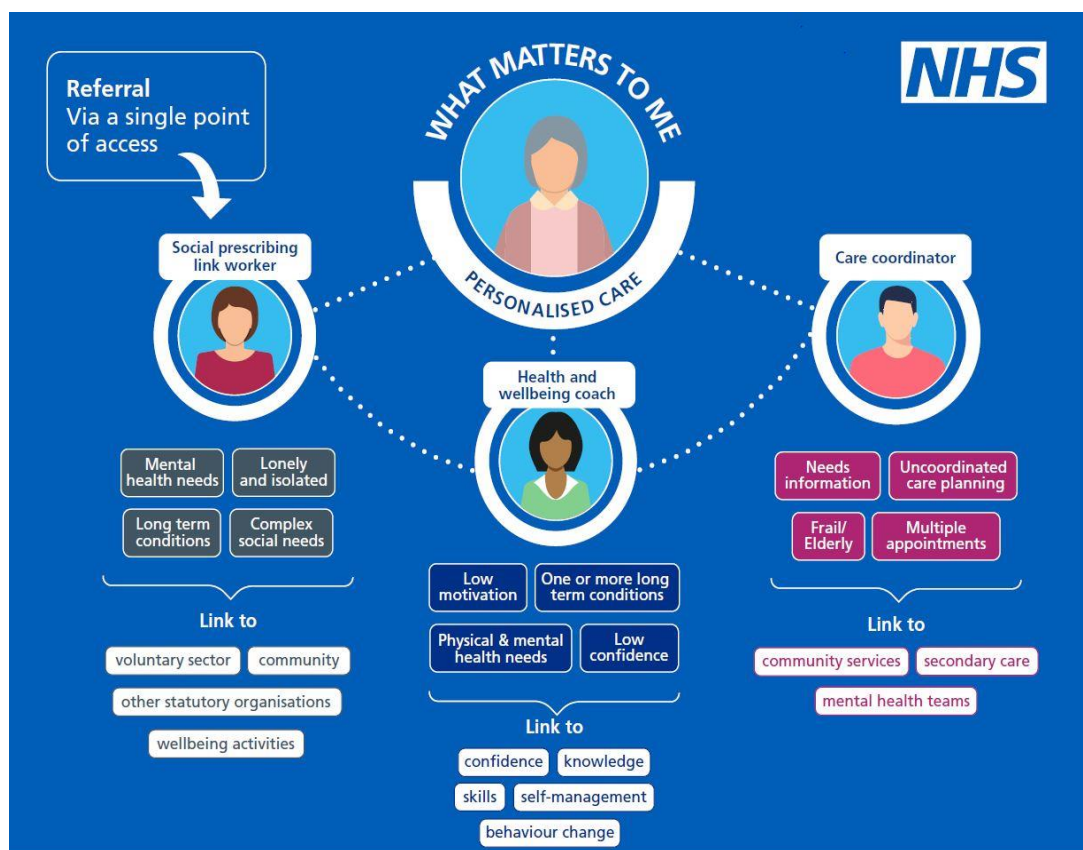


REGIONAL SUPPORT OFFER TO PRIMARY CARE NETWORKS:

Developing strategies to make effective use of the Personalised Care 'additional' roles in Primary Care

Why are the Personalised Care roles important?

In addition to social prescribing link workers, in April 2021 Personalised Care introduced 2 new roles: health & wellbeing coaches, and care co-ordinators. These three roles can play a key role in helping people to stay well, prevent onset or deterioration of ill health, avoid GP appointments or hospital admissions, and support people after a hospital stay. We know that many primary care networks (PCNs) have now employed significant numbers of these roles, and that to work most effectively PCNs will want to think about how they interact and fit into their overall strategy to make most efficient use of workforce, tackle neighbourhood inequalities, prepare for proactive social prescribing, support population health management approaches, and give people high quality, safe and appropriate support.



What is the support offer?

Time with experts in social prescribing to help you develop clear strategies to make the most of these roles. This support offer is currently only **available until March 2022** so early contact is advised.

The experts will work with you on “what matters to you”, flexing their support to meet your needs – this might be a single meeting to answer some key questions or test some ideas, to 2-3 meetings or a workshop involving wider members of the PCN team to help raise awareness of the three personalised care roles and how they fit as part of a multi-disciplinary team approach to care. We will shape the offer with you to meet your needs.

To take up the offer...

- For Cambridgeshire & Peterborough, Suffolk & North East Essex and Mid & South Essex, please contact Siân Brand, East of England Regional Social Prescribing Facilitator & Learning Coordinator via sian.brand2@nhs.net
- For Hertfordshire & West Essex, Norfolk & Waveney and Bedfordshire, Luton & Milton Keynes, please contact Tim Anfilogoff, East of England Regional Social Prescribing Facilitator via tim.anfilogoff@nhs.net

Our regional experts

Both Siân and Tim have extensive experience of social prescribing and community-based approaches and have been working with the national social prescribing team for over 6 years; they form part of the range of regional support to help ICSs implement personalised care in the East of England, in order to meet the ambitions of the NHS Long Term Plan.

Further information can be found in these short bios.



Tim Anfilogoff Bio
.docx



NHSE SP Biography
Sian Brand 05.21.docx