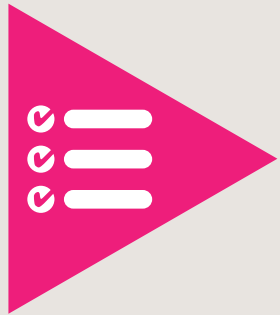
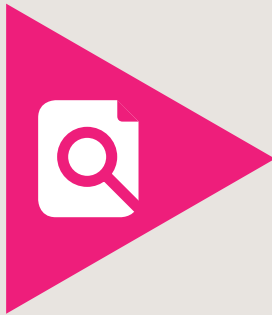


What will my journey through the CoSRH Diploma look like?

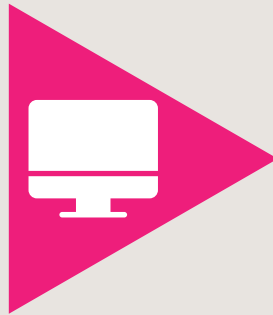


Check you meet our **CoSRH Diploma (DCSRH) entry requirements**.



Find a College Registered Training Programme **using our online map**.

Type in your postcode or the location where you intend to train and contact a nearby trainer to check their availability and fees.



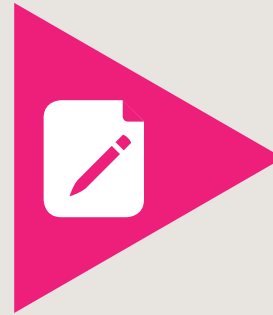
Once you have your CRT secured, you can apply for our DCSRH.

There is a fee which you will need to pay upfront when applying. You will also need to provide evidence to support your entry requirements. If accepted you will have access to our CoSRH Training Hub to start your DCSRH.



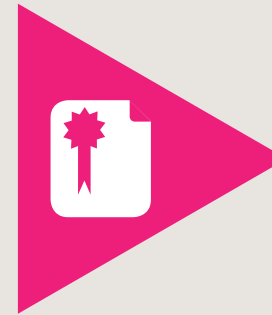
Complete the DCSRH learning and assessments within a maximum of **two years**.

Your CRT will support you in completing your DCSRH assessments. Other assessments are self-directed and at your own pace.



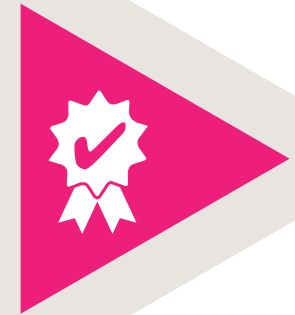
Undertake the evaluation as part of the completion of your DCSRH.

We will use this feedback to continually improve the experience of future DCSRH candidates.



Become a CoSRH Diplome member.

On completion of the qualification you will join as a Diplome member to receive your DCSRH certificate and use the DCSRH post-nominals. You'll also gain continued access to our CoSRH Training Hub and a range of membership resources.



Recertify your DCSRH every five years.

As a Diplome member, you benefit from free recertification of your qualification. This enables you to demonstrate your ongoing development and that DCSRH learning outcomes have been maintained.



CoSRH

The College of Sexual & Reproductive Healthcare